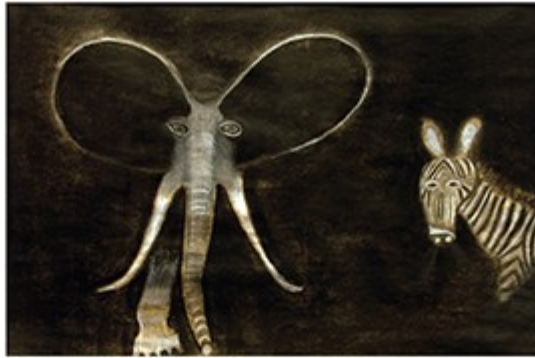


Drawing exercises by Nathan Riggs (top) and Leon Martinez (bottom)

Art selection and comment by [Lil Copan](#) in the [October 28, 2015](#) issue



\* ASSIGNMENT #10  
A WHILE BACK YOU SENT A LETTER DESCRIBING ASSIGNMENT #10. YOU WANTED TO DO LIGHT AND SHADOW IN REVERSE OF THE SPHERE ON ASSIGNMENT #4. SO HERE IS MY COMPLETED SPHERE IN REVERSE.

\* ASSIGNMENT #7  
I LOOKED AROUND MY CELL WITH THE CELL LIGHT ON AND I NOTICED THE LIGHT AND DARK AREAS FILL AROUND THE WALLS AND CORNERS AND EVERYWHERE JUST AS I AM. I HAVE A LITTLE BETER REALIZATION OF LIGHT AND SHADOW AROUND ME.

\* ASSIGNMENT #8  
I NOTICED ALL THE LIGHT AND DARK AREAS ALL AROUND AND THE TWO COLORS. I LIKE THE ONE AS (GIVEN) IT FEELS LIKE IT FALLS ME INTO THE CREATING.

ELICAN BAY STATE PRISON  
SECURITY HOUSING UNIT C-3



Treacy Ziegler works with artists in prison like Nathan Riggs and Leon Martinez, sometimes presenting her curriculum to them by mail. “The act of drawing, even in prison, gives access to an experience of one’s world. Prisoners, like most people, typically think that drawing is ‘about’ something—a picture of something. But when drawing is the process in which the artist discovers the world, it becomes a dynamic experience.” Ziegler works at Prison Express, which is supported through the Center for Transformative Action, affiliated with Cornell University. A significant number of the prisoners Ziegler works with are in solitary confinement.